



VF300 Smart Face Identifi- cation Terminal

Introduction

VF300 is a new generation facial identification terminal, with Face, RFID and PIN Recognition mode. With latest facial algorithm and large capacity platform, it holds 200 face templates without dividing into groups, and its verification time is less than 1 Second. All setting operations are easily done on 3.0-inch TFT touch screen. The elegant and small size design can fit with your slap-up office. Have ZK Face identification system, your life will become more secure and convenient.



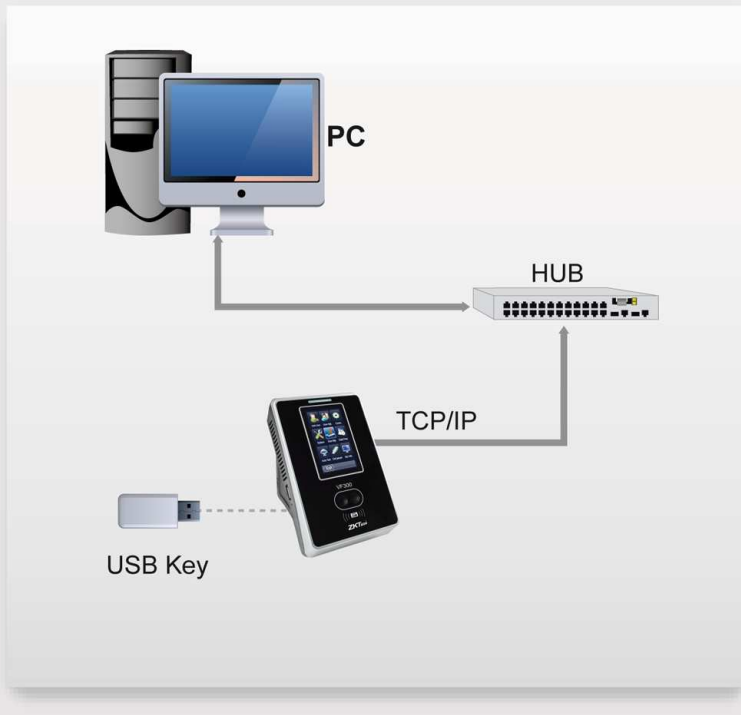
Copyright © 2012, ZKTeco, Inc. All rights reserved. ZKTeco, may, at any time and without notice, make changes or improvements to the products and services offered and/or cease producing or commercializing them. The ZKTeco, logo and trademark are the property of ZKTeco, Inc.



Features:

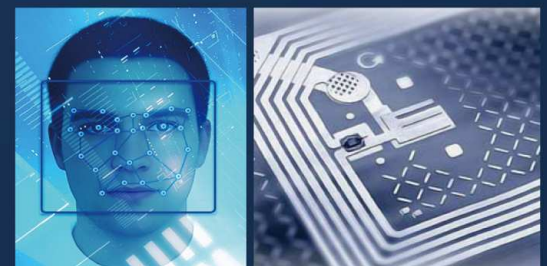
- * Elegant ergonomic design.
- * TCP/IP communication and USB Host.
- * 3.0-inch TFT touch screen, T9 Input, and 9 Digit User ID.
- * Infra-red optical system enables user-identification in poorly lit environment.
- * Optional Mifare card module.
- * Professional facial identification algorithm.

Configuration:



Specifications:

Image Sensor	Special Stereo Dual Sensor
Display	3-Inch Touch Screen
Face Capacity	200(1:N)
ID Card Capacity	10,000
Logs Capacity	100,000
Communication	TCP/IP, USB-Host.
Standard Functions	ID Card, Automatic Status Switch, Self-Service Query, Work Code, T9 input, 9 Digit User ID, DLST, Scheduled-bell.
Optional Functions	Mifare Card.
Power Supply	12V/1.5A.
Verification Speed	≤1S.
Operating Temperature	0°C-45°C
Operating Humidity	20%-80%
Dimensions	104.70(L)*160.00(H)*36.00(D) mm



ZKTeco Inc.

ZK Mansion, Wuhe Rd, Gangtou, Bantian, Buji Town, Longgang District, Shenzhen China 518129
 Tel: 86-755-8960 2345/46/47/48
 Fax: 86-755-8960 2675
 www.zkteco.com



Brochure Download